

Specification

Model	LIC120SSP
Pick up Element	1/3" SONY EXview HAD CCD II
Effective Picture Elements (H×V)	NTSC:976(H)×494(V),PAL:976(H)×582(V)
Horizontal Resolution	700 TV Line
Minimum Illumination	0.001 Lux
S/N Ratio	52dB
Scanning System	2:1 interface
Synchronous System	Internal, Negative sync.
Auto Electronic Shutter	NTSC: 1/60s~1/100,000s, PAL: 1/50s~1/100,000s
Gama Characteristic	0.45
IR Distance	120 Meters (with ϕ 42X4 PCS Infrared LED)
IR Status	Under 10Lux by CDS
IR Power On	CDS AUTO Control
Video Output	1Vpp, 75 Ω
Auto Gain Control	Auto
Power/Current	DC12V(+/-10%)/1500mA
Lens	5 - 50mm Manual Zoom Lens
Dimension (mm)	230(W)x180(H)x115(D)
Weight (g)	2100
Storage Temperature	-30~+60 $^{\circ}$ C RH95% MAX
Operating Temperature	-10~+45 $^{\circ}$ C RH95% MAX

Packing List

No	Name	Model	Number
1.	Weatherproof IR Color Camera	LIC120SHP	1
2.	User Guide	LIC120SHP	1

Franchiser :

LIC120SSP Color Camera

Weatherproof IR Color Camera



Notes : Before providing power for the camera, please read this User Guide in detail!

Do not attempt to disassemble the camera. If the camera can not work, please contact local franchiser or our company.

BRIEF OF PRODUCT

* Sensor (CCD)

Adopt SONY 1/3" CCD Sensor.

* Auto Gain Control (AGC)

Built-in auto gain control (AGC) circuit. The color camera can get high definition picture in low Lux condition.

* Scanning Mode

NTSC or PAL mode.

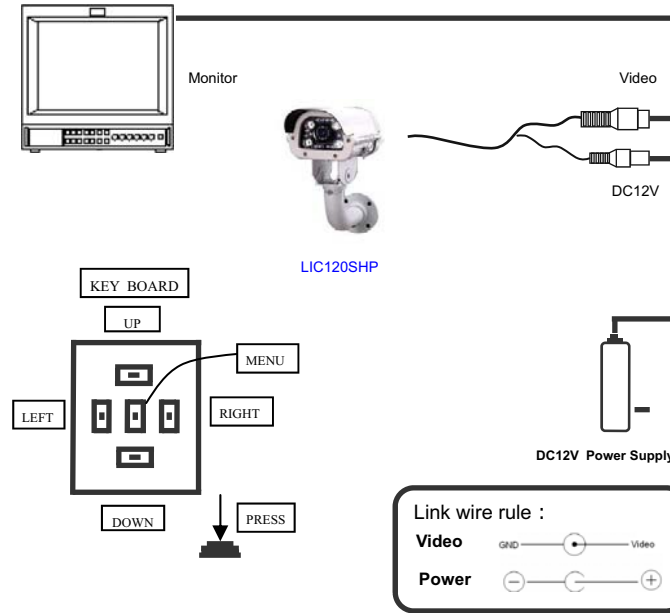
* Water Resistance

IP66.

* OSD SETTING

OSD SET	AE mode	Standard AE	
		SWDR	Level :0~8, DWDR: On/Off
		BLC	Level : Auto/Low/Middle/High
		HLC	Set range, Level : Low/Middle/High, Mask grayscale:1~6
		Face AE	Frame : Off/On ,Sensitivity : 0~11
		Face auto zoom	Frame:Off/On, Sensitivity : 0~11, Warning trigger :High/Low/Off, Warning seconds
	Color adjust	Demist	Level : Auto/Low/Middle/High
		AWB	AWB,ATW,F/A,U30,CWF,D50,D65,D75
			Brightness:0~99,Color-Red:0~99,Color-Green:0~99,Color-Blue:0~99,Contrast:0~99,Saturation:0~99
	Image Adjust	CR suppress	Off, On
		Day & Night	Off, On, Auto, Ext
	Intelligence	Digital slow shutter	Auto, 1/50, (1/60), 1/100, 1/250, 1/500, 1/2000, 1/5000, 1/10000, 1/100000, 1x, 2x, 3x, 4x, 5x, 6x, 7x, 8x, 16x, 32x, 64x, 128x, 256x
			3D-NR: 0~3, 2D-NR-1: 0~32, 2D-NR-2: 0~32, Sharpen: 0~32, FC-suppress: 0~15, Blemish compensation: 0~3
		Face detectoin	Switch: Off/On, Frame: Off/On, Sensitivity: 0~11, Warning trigger: High/Low/Off, Warning seconds: 0~65535
		Motion detection	Switch: Off/On, Set range, Sensitivity: -2~2, Warning trigger: High/Low/Off, Warning seconds: 0~65535
System setting	D-Zoom	D-Zoom: 1~256, Tilt: -100~100, Pan: -100~100	
	Privacy mask	Opacity: 0~3, Mask select :1~8, Set mask area, Switch: Off/On, Mask color: 0~65535	
	Lens	Manual/DC-Indoor/DC-Outdoor	
	IR input level	High/Low	
	Smart IR control	Off/On	
	Camera ID	0~255	
	Baud rate	1200/2400/4800/9600/19200/38400/57600/115200/230400/460800	
	AC Freq	50Hz, 60Hz	
Information	Language	English, Francais, Espanol, Pyccknn, Chinese	
	Show ID/Icon	show icon, show ID, show ID/Icon, Off	
Information	Version information		

CONNECTING



TROUBLE AND SOLUTION

1. No Picture after providing power

- . May be the power supply voltage abnormality, please check the power supply voltage and pole whether exactitude.
- . Please check all the connecting cable and monitors whether be connected correctly or not.

2. The picture level direction have flowing interference ripples

- . May be caused by the power supply AC ripples, it need filter the wave of the power supply.
- . Check the monitor and peripheral equipments used.

3. The picture background color changes continuously

- . The fluorescent lamp's electromagnetic field cause color roll. This is proper phenomenon of the cameras.
- . Reduce the fluorescent lamp numbers or increase the distance between the camera and the fluorescent lamps can improve it.
- . Use power supply external sync. camera can solve it.

4. The picture smear too mass

- . The power supply's voltage unstable.
- . Connecting cables not connect correctly or have high impedance.

INTRODUCTION

Congratulations on your purchase of this product. This User Guide suits LIC120SHP product. We adopt the latest SONY technical of sensor and driver. The most attractive characteristics are small and easy hidden, suits the elevator and corridor. In addition, it owns the characters of high definition and stability, strong anti-jamming, rich and real color. Fixing and using this model are convenient too. It is very good for you to apply to your CCTV system.

Please read this instruction manual carefully to ensure proper use of the product.



To prevent fire or shock hazardous. Do not expose the unit to rain or moisture.



The symbol is intended to alert the user to the presence of important operating and maintenance (servicing) Instructions in the literature accompanying the appliance.



The symbol is intended to alert the user to the presence of uninsulated 'dangerous voltage' within the product's enclosure that may be of sufficient Magnitude to constitute a risk of electric shock to persons.

CAUTION:

RISK OF ELECTRIC. DO NOT OPEN

SHOCK
CAUTION: TO REDUCE THE RISK OF ELECTRIC
DO NOT REMOVE COVER OR BACK NO USER
SERVICEABLE PARTS INSIDE. REFER SERVICING

CAUTION: TO PREVENT ELECTRIC SHOCKS AND RISK OF
FIRE HAZARDS, DO NOT USE OTHER THAN
SPECIFIED POWER SOURCE.



Note:

- Please note the camera's operating temperature and its using environment requirement. Avoid using the camera at too high or too low temperatures. The operating temperature is -30~+60°C. (Recommendatory operating temperature is -10~+45°C.)
- Never make the camera face the sun or bright object. Otherwise, it will damage the CCD.
- Do not mount the camera near by the radiator or heater.